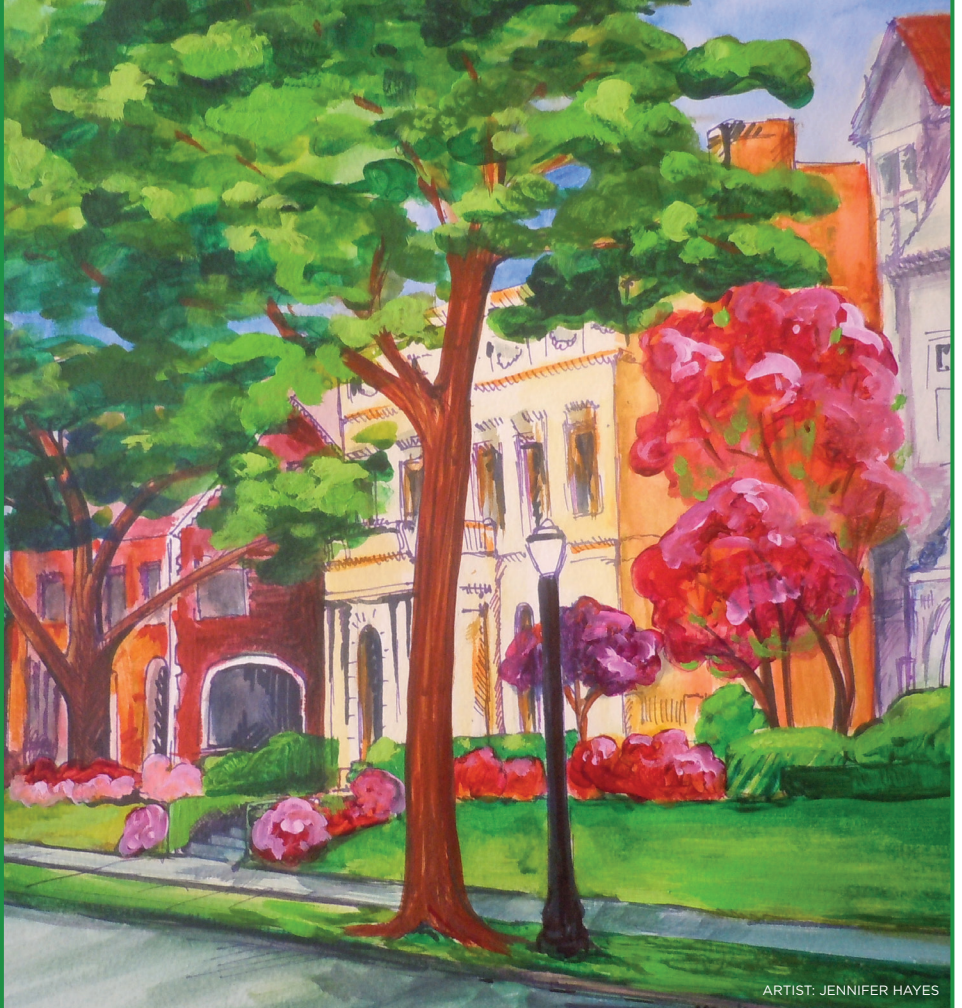


CENTRAL WEST END

HOUSE & GARDEN TOUR - 2014

Portland Place



ARTIST: JENNIFER HAYES

A NATIONAL REGISTER HISTORIC DISTRICT

presented by



FRIDAY, MAY 30TH
SATURDAY, MAY 31ST
SUNDAY, JUNE 1ST
www.thecwe.org

A Central West End Association Event



LADUE NEWS

 **Pulaski Bank**



*Selling the finest
CWE homes and
Condos for the
Past 30 years*



**PAUL
MITTELSTADT**



**AMY HOWELL
MITTELSTADT**

**Home Office:
314-361-8888**



See our website
www.PaulRE.com





JAMIESON

INTERIOR DESIGN . INTERIOR ARCHITECTURE
314-371-1777 . JAMIESONDESIGN.COM



SAINT LOUIS BOARD OF ALDERMEN

LYDA KREWSON - 28TH WARD

May 22, 2014

Dear Neighbors and Visitors:

Welcome... to the 44th annual Central West End House Tour! I know you will enjoy visiting the lovely homes on Portland Place. These homes are some of the most sought after addresses in the CWE and the street is known for its sense of community and friendliness.

While you are in the neighborhood, be sure to visit the unique shops and restaurants just a block away on Euclid.

Thanks so much for spending part of your weekend with us. I hope you will come back often.

My Best,

Lyda Krewson
Alderman - Ward 28

Room 230 - City Hall • Saint Louis, Missouri 63103 • (314) 622-3287 • Voice Mail 622-3765 • Fax 622-4273
502 Lake Avenue • Saint Louis, Missouri 63108 • 367-9765



Rodemyer Christel, Inc.

REALTORS

Specializing
in multi-family apartment and
condominium association management



(314)454-0800

www.rcirealty.com

3630 Grandel Square | St. Louis, MO 63108

Libby's

The Picasso of Women's Clothing
Central West End
4742 McPherson Ave. • St. Louis, MO 63108



Tuesday - Saturday
11 AM to 6 PM
Sunday
11 AM to 4 PM

314-454-3003

Deborah Gibbens
owner

metrōlofts

URBAN LIVING IN THE WEST END

- **apartments**
- **furnished suites**



4535-4555 Forest Park Avenue
Between Euclid & Taylor
St. Louis Bread Co. on-site • Across from BJC

leasing@metrolofts-stl.com

www.metrolofts-stl.com

314.367.2400

**FREE
Wi-Fi**

SAVE \$50
on your application fee
by bringing in this ad!

Table of Contents

| | |
|---|----|
| Welcome..... | 2 |
| Acknowledgements..... | 6 |
| CWE Association..... | 10 |
| History of Portland Place Mansions..... | 12 |
| House Tour Homes..... | 16 |
| Movies on the Plaza..... | 32 |
| CWE Flea..... | 34 |
| Forest Park Attractions..... | 36 |

A Publication of
STL Programs
1008 Hanley Industrial Ct.

Copyright ©2014

President: Jeff Fister
jefff@mirasmart.com
(314) 220-5020 • fax: (314) 644-0233

Sales Directory: Tammy Brownfield
tammyb@mirasmart.com
(314) 644-2501

Sales Assistant: Scott Lanemann

Graphic Designer: Christine Shoemaker



THE
FOUNTAIN
On
LOCUST



**Exceptional Ice Creams
& Fresh Scratch Made Food**

3037 Locust Street - in Midtown
The Most Photographed Restaurant in St. Louis

Good for **\$1 OFF** any
Fine Ice Cream (\$1 or more)
fountainonlocust.com 314-535-7800

The Central West End Association House Tour program (© 2014) is published by STL Programs, a division of Mira, Inc., for the Central West End Association. While we have endeavored to be as complete and as accurate as possible, we are not responsible for any errors or omissions that have occurred.



**STL
PROGRAMS**



**Specializing in the Sales
of fine properties in:**

- ★ Central West End
- ★ Historic Neighborhoods
- ★ Clayton
- ★ Ladue
- ★ Richmond Heights
- ★ University City

Personalized Service

**DANIEL B. FEINBERG
REAL ESTATE
314-721-5600**

ATRIUM GALLERY

Featuring

Regional, National,
and International Artists

Contemporary Art
painting, drawings, sculpture,
photography

Large elegant exhibition space
Convenient CWE location

4814 Washington Ave.
St. Louis, MO 63108
314-367-1076

atriumgallery.net

GROOMING

*

BOARDING

*

DAYCARE



TOWER GROVE SOUTH
3892 Wyoming St.
(314) 664-3647

WEST END
5595 Pershing
(314) 875-0087

Healthy Holistic



A WALK IN THE PARK

Acknowledgements

HOUSE TOUR COMMITTEE

Frances Thompson, Chair
Anthony Baima
Dixie Buford
Jeff Fister
Heather Hogan
Amy Howell
Pat Rein
Tom Topping

PREVIEW PARTY CO-CHAIRS

Amy Howell
Pat Rein
Frances Thompson

HOUSE CAPTAINS

Pat Rein, Chair
Anthony Baima
Dixie Buford
Anna Cardot
Noel Moss
Marty Saladin
Melody Walker

PARTNERS

Stella Artois
Pulaski Bank
Ladue News
Bowood Farms
Bissinger's
Gamlin Catering
World Chess Hall of Fame
Circus Kabut

FLORISTS

Botanicals Design
Ladue Florist
Straub's
The Flower Shop at The
Chase Park Plaza
Walter Knoll
Wildflowers

A SPECIAL THANK YOU

Martin Jaffe
Karen Clifford
Jennifer Hayes
Lea Luchetti
Tim & Katie O'Connor
Travis White
Nathan Ambus
Nicki Dwyer
Maggie Pearson
CWE North CID
New City School
Washington University
E'Little Media Group

Nathalie's

From our
Ovenlook Farm
to chef's kitchen
to your table

4356 Lindell Boulevard
Saint Louis, MO 63108
314 533 1580
nathaliesstl.com



3 STAGES

FOOD & DRINK

181 ARTISTS

CREATIVE CASTLE

saint louis ART FAIR

IN THE HEART OF CLAYTON

September 5, 6, 7

For more information please visit:
www.culturalfestivals.com



- Kitchen & Bath Remodel • Room Additions • Service Panel Upgrades
- Code Corrections • Basement Remodels • No Job Too Small

**For All Your Electrical Needs
Call Dave or Dan (314) 644-3614**

WE'LL PAY YOU TO SWITCH TO PULASKI BANK!

Stay connected to your money 24/7 with *Connection Checking*.

- FREE checking...no minimum balance or monthly service fee!
- FREE e-Banking, bill pay, mobile banking, and mi-Deposit**
- Annual overdraft rebate coupon
- FREE Pulaski and MoneyPass® ATM transactions
- VISA® Debit Card with rewards points for purchases



Central West End Bank
#10 Maryland Plaza
314-367-8333

**Stop by today, and make the switch
to a better way to bank!**



Pulaski Bank

www.pulaskibank.com

*Bring in this ad and earn a \$25 cash bonus just for opening a new Connection Checking account. Earn an additional \$25 when you set up a qualifying direct deposit on your new Connection Checking account within 60 days of account opening. Your account must remain open for one (1) year to receive the remaining \$50 bonus. The first \$25 or \$50 bonus will be credited to active accounts with a positive balance within 90 days of account opening. The second \$50 bonus will be credited to active accounts with a positive balance within 30 days of the accounts one year anniversary. Offer limited to one per household and available only to households that have not closed a Pulaski Bank transaction account within the last 90 days. Offer cannot be combined with any other offer and may be withdrawn at any time. Incentive reported as interest to the IRS. Minimum to open account \$25. Offer expires 6/30/14. **Your mobile carrier's text messaging and web access charges may apply. Member FDIC.

We are so grateful...

- To the wonderful homeowners who graciously opened their homes and gardens to be a part of the 44th annual CWE House & Garden Tour.
- To the Portland Place Trustees and residents on Portland and Westmoreland for allowing the CWEA to host this long-standing event on their private street.
- To our Sponsors and Partners for their valuable financial and in-kind support.
- And a very special thank you to Paul Mittelstadt, the entire CWEA House Tour Committee and the many volunteers who have given so much of their own personal time and energy to make this year's event a success.



 **THE VINO GALLERY**

4701 McPherson Ave.
St. Louis, MO 63108
314.932.5665

Enjoy a glass of wine at our tasting bar.
thevinogallery.com



GARY BOYSON

314.374.5764
gboyson42@gmail.com
janetmcafee.com/garyboyson



Gary is an experienced real estate agent that works all over the central corridor, specializing in the Central West End. Working with Gary you can be rest assured that you will get quality service. Having made the move into the residential real estate industry in 2007, Gary strives, and continues to be a sales-driven performer. He has sold many homes on the private streets of the Central West End and currently is growing his clientele in the large condominium sector. Combining Gary and the resources of Janet McAfee Real Estate will ensure a seamless home buying/selling experience. If you are looking for your dream home or selling your current, contact Gary Boyson, he would love to help.



Two of Gary's Current Listings

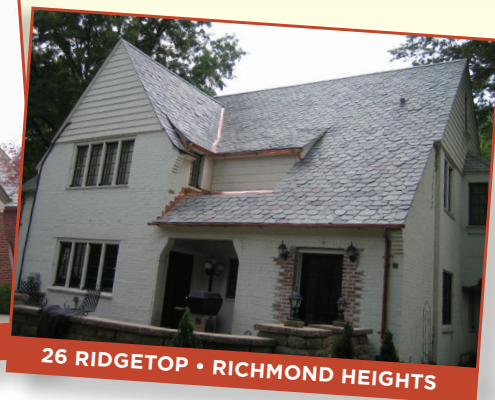
janet mcafee real estate | 9889 clayton road | saint louis, missouri 63124 | 314.997.4800

WE'RE GREAT WITH SLATE

Hail damage? B. Raines Construction and Roofing can get you a

WHOLE NEW ROOF AND GUTTERS!

All you pay is your insurance deductible.



B·RAINES
CONSTRUCTION
AND ROOFING

Slate • Copper • Tile



Historical craftsmanship – Today's technology

Contact us for a free, no-obligation roof inspection:
b-raines.com • 314-488-2988

Central West End Association

This year, the Central West End Association will celebrate its 57th anniversary. As the neighborhood organization that represents residents, the Association has spearheaded many efforts over the years, including architectural preservation, neighborhood beautification and security, working collaboratively with other stakeholders to make the neighborhood stronger. Today, the CWEA continues to enhance connections between neighbors by providing timely information, hosting forums for discussion and coordinating social activities.

Contact

4814 Washington Blvd. Ste. 302

Telephone: 367-2220

Operations Coordinator: Tom Topping

E-mail: cwea@thecwe.org

Website: thecwe.org

Contact the office for committee meeting lists and meeting times.

CWE North Community Improvement District

4818 Washington Blvd.

Contact: Kate HaHer, Kate.HaHer@cwenorth.cid

Neighborhood Security Initiative

Telephone: 454-5808

Fax: 361-0496

Jim Whyte, NSI Executive Director

447 N. Euclid Ave.

St. Louis, MO 63108

E-mail: jwhyte@cwensi.com

Website: <http://cwensi.com/>



Events

FIRST FRIDAY HAPPY HOUR

First Friday each month at a participating restaurant/bar

CWE FLEA

First Saturday, May thru November

MOVIES ON THE PLAZA

Last Wednesday, May thru August

This is only a partial list. Please visit: www.thecwe.org for updated event information.

**LOCAL
SOCIAL**

*eat*SHOP*experience* CELEBRATE ALL THINGS LOCAL

SECOND FRIDAYS 5-9 PM

MAY 9 JUN 13 JUL 11 AUG 8



CENTRAL WEST END
THE BEST OF URBAN ECLECTIC

eat. shop. explore. cwscene.com

Portland Place Mansions: World's Fair Elegance



With its wide boulevard, landscaped median and stone mansions, Portland Place epitomizes the “Meet Me in St. Louis” style of elegance. Portland Place was designed in 1888, along with neighbor Westmoreland Place, by noted St. Louis private place surveyor Julius Pitzman.

Portland and Westmoreland places were conceived by the Forest Park Improvement Association as private streets, and so they remain today. They are listed on the National Register of Historic Places.

The architects who built the Portland Place homes from 1891 to 1927 include high-profile and legendary figures such as Theodore Link, Hellmuth & Hellmuth, James P. Jamieson of Cope and Stewardson, Eames & Young and Ernst Janssen, among others.

The architectural styles follow three general trends that reigned over the years of the bulk of construction. In the early years, the waning Queen Anne style was popular, along with Richardsonian Romanesque. The latter was created by Bostonian H.H. Richardson, who put his own spin on the Romanesque style. Then Classical style derived from Italian and Renaissance architecture made inroads. After the turn of the century, Tudor and Georgian Revivals were the favorites.

Noteworthy early residents included N.S. Chouteau, whose lineage is of the St. Louis founding family, and members of the prominent St. Louis families of Orthwein, Desloge, Lambert, Stix, Baer, Pulitzer and others.

To enter Portland Place from either end, one must pass through an exquisite stone and iron gate. Built in 1890 before a single house was constructed, the gates were designed by Theodore Link, who was not yet famous for his design of St. Louis Union Station.

The gate at Kingshighway Boulevard is austere — in comparison to the houses beyond — with a tower-like, stone guardhouse set on the north side of the entrance and a double-hung wrought-iron gate spanning the roadway. A stone pillar supports the gate at the south edge of the entrance.

The gate at Union Avenue is similar but without a gatekeeper’s residence.

Both gate structures extend past the sidewalks on each side of the street, where smaller iron gates, supported by stone pillars and a canopy, allow pedestrians to enter the sidewalks of one of the finest streets in the city.

The **RESIDENCES** *at* *Forest Park Hotel*

LUXURY APARTMENTS IN THE CENTRAL WEST END

where the historic Forest Park Hotel has been beautifully transformed into studio, one and two bedroom apartment homes.



1 Bedrooms from \$1,530
2 Bedrooms from \$1,875

314.367.3300

4910 W. Pine Boulevard | St. Louis, MO 63108

www.livinginsaintlouis.com

forestpark@fairwaymanagement.com

40 Portland Place *Central West End*



BEYOND THE EXTRAORDINARY

40 Portland Place This Richardsonian Romanesque mansion was built in 1897. A rosewood paneled entry and staircase, with an Italianate mosaic floor, rich carvings and frescos leaves a lasting first impression. Exquisite millwork, plaster moldings, iron and cut stone throughout the home showcase the craftsmanship of a bygone era ... each room more magnificent than the last. Six bedrooms, six full and two half bathrooms, updated kitchen, pool and 4-car carriage house with apartment. \$1,750,000

Dielmann | Sotheby's
INTERNATIONAL REALTY

dielmannsothebysrealty.com



314.725.0009

Dielmann Sotheby's International Realty 8301 Maryland Avenue, Suite 100 St. Louis, Missouri 63105



THE TENDERLOIN ROOM

A SAINT LOUIS
GOURMET
STEAKHOUSE



LOCATED IN THE HISTORIC
CHASE PARK PLAZA



232 N KINGSHIGHWAY BLVD
SAINT LOUIS, MO 63108

314.361.0900

TENDERLOINROOM.COM
PROUDLY OFFERING COMPLIMENTARY VALET PARKING

TOUR THE MAGIC CHEF MANSION
3400 RUSSELL BOULEVARD

Russell Boulevard borders the Compton Hill Reservoir Park to the south. The Mansion is at the southeast corner of the park on the south side of Russell. Parking on Russell is free.



Tours are scheduled in conjunction with *most Saturday afternoon* Compton Hill Water Tower Openings.

2014 Schedule*

June 7 • July 5 • August 2 • September 6 • November 1
Noon - 4 p.m.

Adults - \$15 Seniors 65 & up - \$12 Children 6 - 12 - \$8
Children under 6 years - Free (All children must be accompanied by an adult.)

*NOTE: Tour schedule subject to change. For more information, visit the Magic Chef Mansion Website -

www.magicchefmansion.com



Be a scholar athlete.

Be an artist and a research scientist.

Be a chess master.

Be a success in college.

Be someone who makes a difference in the world.

Be it all. **BE YOURSELF!**

100% OF CLASS OF 2013 - 43 STUDENTS - RECEIVED MERIT-BASED COLLEGE SCHOLARSHIPS TOTALING MORE THAN \$8 MILLION.



**CROSSROADS
COLLEGE PREPARATORY
SCHOOL**

Grades 7-12 • Near Wash U. & SLU
314-367-8085
www.crossroadscollegeprep.org

23 Portland Place



Eames & Young designed the house at 23 Portland Place for William Thornburgh, the owner of a paint and glass company. The building permit was issued Aug. 23, 1892. After Thornburgh died eight years later, his widow and family remained in the house for another 17 years.

The saffron-colored brick home with bands of Carthage marble and terra cotta swags is styled in the Italian Renaissance tradition. The combination of carved ornamentation and short third-floor windows are reflective of the 16th-century Library of San Marco in Venice. The three-story home has 22 rooms, an attic and a full basement with fireplace.

The main entry opens to a quarter-sawn oak staircase featuring a 14-foot bowed stained-glass window at the main landing. The mahogany-paneled dining room is warmed by a marble fireplace, brass and copper light fixtures and a leather frieze at the ceiling. The house includes eight fireplaces on the first and second floors, including a wood and marble fireplace in the wood-paneled first-floor library.

Special features include entries to the side porch from the ladies parlor and main living room, a floor-to-ceiling wall safe and an elevator from the basement to the third floor.

The current owners purchased the house in 1997.

Meet.
Dine.
Drink.
Dance.
Stay...



IT'S ALL IN

The Chase

CHASEPARKPLAZA.com call 314 633 3000



28 Portland Place



The featured garden, behind the three-story English Tudor designed in 1919 by James P. Jamieson, has been under the current owner's loving care for 25 years. Divided into "rooms" of eclectic design, the garden is always changing. The garden tender has no problem with volunteer plants claiming her garden as their home, and the result is "controlled chaos."

A wrought-iron gate and brick walls form a border, and meandering pathways run through the Monet-inspired paradise that features a small water garden complete with a water lily and goldfish.

The garden features two sculptures by Ella Tulin, *Woman in a Bath* and *Renya*, as well as a striking stone nude and several other strategically placed sculptures.

Some outstanding plant features include a tall orange-flowering tropical *Jatropha* tree, flowering shrubs, hydrangeas and a plant-covered seating area with a teak bench, embellished by seashells from a Galveston beach house.

Inlaid natural stones line the in-ground pool, which is painted black to enhance the mirror effect of the water. The owner used to do most of the planting and upkeep herself, but recently brought in some help. Landscape artist Gay Goessling helped design some of the garden more than 20 years ago.



OUR PASSION IS REVEALING
THE TRUE BEAUTY
OF YOUR HOME.

innovative
CONSTRUCTION & ROOFING

314-546-4047

10232 BAUR BLVD. ST. LOUIS
WWW.INNOVATIVEROOF.COM

Save the date

October 20 - 21, 2014

Second Presbyterian Church
www.secondchurch.net



The Pfautch Lectures

32 Portland Place



The Beaux Arts mansion at 32 Portland was designed by Weber and Groves for Charles and Cornelia Fuch in 1898.

The carved stone work is typical of the stonecutter's art at the turn of the 20th century. The front portico is supported by pairs of composite-style columns, and its ashlar limestone façade is richly adorned with swags and garlands. Inside, the grand foyer retains the 1930s black-and-white marble floor, but has much more light, courtesy of a grand crystal chandelier, than the original owners' dark decoration.

A painting by Ronald Davis hangs over a marble mantle in the morning room, which glows with peach colors, Asian accents and a molded plaster ceiling. The dining room is graced by a painting by Alexander Leiberman. The current owners remodeled the kitchen in 2009.

The library on the east side was repaneled in the 1930s by the home's third owners, Dr. Isaac Kelley Jr. and his wife Kathleen McBride Kelley, the first couple to be married in the St. Louis Cathedral on Lindell in 1914. But the library lost its charm when Dr. Kelley was kidnapped from the room in 1931. He was released eight days later to a *St. Louis Post-Dispatch* reporter.

Garages • Garage Ports • Carriage Houses



CONSTRUCTION

"from foundation to finish"

Experts in building and renovation

314-822-8111



Specializing In

Driveway & Patio

New and Replacement

*Exposed Aggregate, Decorative Stamped,
Traditional Concrete*

www.stl-concrete.com



St. Louis Concrete, LLC

(314) 822-0849

Free Estimates

Buying or Selling... You can count on Cathy!



Cathy Cline DIRECT: 314-412-1244
314-993-8000 | cathycline@coldwellbanker.com
"I love referrals!"



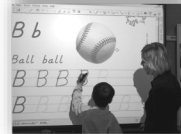
Accredited by the Missouri Chapter of the National Federation of Nonpublic Schools

St. Roch School

6040 Waterman Blvd. • St. Louis, MO 63112
314-721-2595

Educational Excellence — Timeless Values

- Preschool to Grade 8
- Catholic and Christian Faith-based Education
- Challenging Academic Curriculum
- Classical Literature Program – Grades 4-8
- Pre-Algebra & Algebra – Grades 7-8
- Accelerated Math – Grades 1-8
- Junior High Science Lab
- Music, Art, and Physical Education Programs
- Spanish Technology Program – Grades K-8
- SMART Board Interactive Whiteboards
- Morning Care and After School Care
- Co-curricular Activities



www.strochparish.com

timc@strochschool.org



Winner of the 2013 Landmarks Association
Honor Award for 5074 Waterman

4501 Lindell • 314.726.4858 • core10architecture.com





CASTLE DESIGN

7707 CLAYTON RD, CLAYTON, MISSOURI
314-727-6622 | emilycastle.com

now open *contact us for a complimentary
tour of our historic building*

LINK

AUCTION GALLERIES

314 454-6525 or info@linkauctiongalleries.com

5000 WASHINGTON PLACE · SAINT LOUIS · MISSOURI · 63108

WWW.LINKAUCTIONGALLERIES.COM

IN THE CENTRAL WEST END

38 Portland Place



The house at 38 Portland was built in 1905 for the prominent shoe magnate Oscar Johnson Sr. and was designed by Theodore Link, who designed St. Louis Union Station.

The Elizabethan English three-story house once had a formal rose garden with bushes rumored to be taken from the 1904 World's Fair grounds. An owner in the 1980s replaced the garden with a pool.

After Johnson died in 1916, his widow made extensive changes to the house, including enclosing porches and reconfiguring the living room, which features a hand-painted ceiling. At one time, there was a pipe organ in the living room, but that space now houses a bar with a secret door leading to the front foyer. A hidden staircase reaches from the kitchen hall to the second floor, perhaps so the family could avoid passing the help on the stairs.

The main (unhidden) staircase is of carved tiger oak and climbs elegantly all the way to the third floor, where Irene Walter Johnson had her sewing room. Other outstanding features include the oak-paneled formal dining room and a carved marble fountain on the wall in the solarium.

Oscar Johnson Jr. and his family took ownership of the house from 1954 to 1961.



You'll Wish You Had
More Windows Once You
See Our Curtains.

CURTAINS | SHADES | HARDWARE

Whether it's in-stock curtains you can take home today, or custom curtains we'll make, you'll be inspired by our quality, selection and style.

The Curtain Exchange of St. Louis
8119 Maryland
Clayton, MO 63105
314.863.1112



THECURTAINEXCHANGE.COM

39 Portland Place



The first building permit issued for Portland Place, in 1891, was for the Queen Anne Victorian mansion at Number 39, designed by Albert Knell for William and Anna Scott Culver. The second owners, Moses and Marion Rumsey, married off their daughter Elma to the French jeweler Pierre Cartier in 1908. The house became known in recent years as the “Cartier House,” because the Cartiers’ daughter, Marion, donated about \$2.3 million of her mother’s jewelry to St. Louis University in the 1980s.

Quick to catch visitors’ eyes outdoors is a sculptured horse head on the front of the carriage house’s second floor. The carriage house features six granite fenders designed to protect the walls from the jutting wheel hubs of the horse-drawn carriages.

Inside the three-story, 15-room mansion, the only original chandelier hangs in the parlor surrounded by a ceiling mural of four cherubs. A large stained-glass window original to the house dominates the reception hall and opens to the south above a courting bench.

Of the 11 original coal-burning fireplaces, five have been converted to gas and are currently functional. The fireplace mantle in the parlor is ornate wood and the one in the dining room is carved marble.

All but one bathroom has been renovated. The original second-floor bathroom, with walls partially lined with marble, still has the original 1890s bathtub.



Vince
Graye
Slate & Tile
ROOFING

since 1986

QUALITY CRAFTSMANSHIP IN STEEP
AND FLAT ROOF APPLICATIONS OR REPAIRS.
EXTENSIVE EXPERIENCE WITH SLATE, TILE,
SHEET METAL & ASPHALT SHINGLES.

314.487.1819
VinceGrayeRoofing.com

YOUR ST. LOUIS SOURCE FOR:

- New & Used Books •
- Magazines •
- Gift Cards •
- Local & National
- Author Events •
- Friendly Service •

INDEPENDENT
FOR 45 YEARS!

LEFT
BANK
BOOKS

399 NORTH EUCLID AVE.
WWW.LEFT-BANK.COM

Yearning to make a difference?
So are we!

SECONDCHURCH

PRESBYTERIAN CHURCH USA

Serving others. Changing lives.

Join us for worship Sundays at 11:00am in the Central West End
4501 Westminster Place at Taylor | 314.367.0367 | www.secondchurch.net



**Friends.
Family.
Community.**

Evelyn Jamison, Agent
519-521 N. Taylor Ave.
St. Louis, MO 63108
Bus.: 314-361-3800
evelyn.jamison.jkhd@statefarm.com

**We're all
in this
together.**

State Farm® has a long tradition of being there. That's one reason why I'm so proud to support The CWE House Tour. *Get to a better State.®*



1211009

State Farm, Bloomington, IL

RealtyNET
Mary McBride

Mary McBride, GRI, LTG
Broker - Owner

1998 Realtor® of the Year

6708 Chippewa, 63109
RNmcbride@aol.com
St. Louis Hills Office

**A Full Service Company Specializing
in renovation, investment properties
& foreclosures.**

**For a complete list of properties,
log onto www.realtynetmcbride.com**

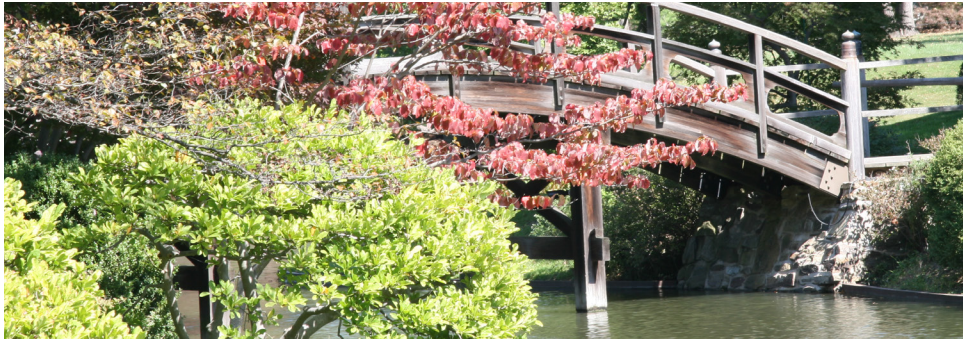
(314) 481-0100

"You'll Be SOLD On Us"

fendler + associates inc.

architects

314.664.7725
www.fendlerworld.com





R.G. ROSS

CONSTRUCTION COMPANY

A Commercial General Contractor, Luxury Home Builder and Restorer



4079 Bayless Ave.
St. Louis, MO 63125

Ph: 314-638-9255

Fax: 314-638-3021

WWW.RGROSS.COM

< *picture courtesy of the
West End Word
and Diana Linsey*

Feel free to contact us for additional information.

42 Portland Place



The Georgian Revival house at 42 Portland Place was designed by Mariner & LaBeaume and built in 1908 for George Patterson Doan and his wife, Ellen Reilly Doan. Architect Louis LaBeaume, a descendant of early French settlers of the city, also helped design the 1904 World's Fair. He designed two other Georgian homes on Portland and Westmoreland in the same James Jamieson style.

On entering the three-story, 10-room home, the focal point is the stunning main staircase and foyer mirror. In 2012, the current owners added a pool designed by architect Mark Critchfield of Mainline Architects.

The house has a view of Frederick Wellington Ruckstuhls' bronze sculpture of Mercury, which sits in the median at Portland and Lake.

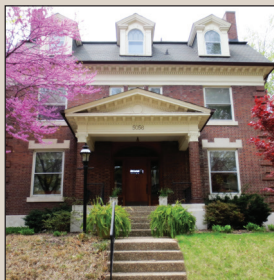
Other previous owners include Solomon Roos, resident manager of the American Metal Co., and his family, who lived in the house for 40 years, from 1919 to 1959. Robert Hough Keiser and his wife, Julia Maffitt Keiser, a descendent of the Chouteau, Maffitt and Skinker lines, lived in the house for one year from 1916-17 before moving next door to 44 Portland, which had been built for Keiser's parents in 1907. More recent owners include Barrett Toan, former CEO of Express Scripts, and his wife, Polly O'Brien.

Gregg Williamson

presents



5045 Westminster Place



5056 Westminster Place



5098 Westminster Place



5291 Westminster Place



4200 Laclede Ave. #102



4570 Laclede Ave. #307



Gregg Williamson

314-359-9210

314-872-6652

Greggwilliamson.com



Prudential

Alliance,
REALTORS®

Movies on the Plaza Showing This Summer

Movies on the Plaza, presented by Stella Artois, is held at sunset on the last Wednesday of every month, through August, fountainside at Maryland Plaza in the Central West End.

Highlights of the outdoor cinema experience include a special movie menu by Bissinger's, trivia contests and prizes, special giveaways, complimentary popcorn, the free movie screening and more.

The movie lineup includes:

- June 25: "Bridget Jones Diary"
- July 30: "Before Sunrise"
- Aug. 27: "A Fish Called Wanda"

Screenings are located on the sidewalk and next to the Maryland Plaza fountain. Limited table seating and chairs are available on a first-come, first-seated basis. Bring a chair for viewing the movie. Parking is available on the street and in the Argyle garage.

Corporate and community partners include: Stella Artois, the Central West End Association, Bissinger's, Coffee Cartel and Adriano Goldschmied.



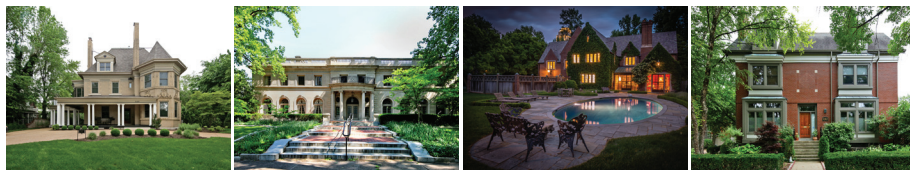
Kevin Hurley & Jim Human

Your CWE Specialists



Kevin Hurley and Jim Human work as a team and have sold residential real estate for a combined total of over 75 years. As lifelong residents of St. Louis, both have had extensive experience in representing buyers and sellers in the Central Corridor market, with

specific expertise in the established neighborhoods of the Central West End. Their experience and knowledge in real estate, coupled with their direct and honest approach, have made them leaders in the industry.



CWE Flea Returns for Second Year

Brooklyn has one, Chicago has several, so why not the CWE! The Central West End's first Open Air Market — the CWE Flea — features a fabulous mix of vendors. It runs every first Saturday of the month, May through November, 9 a.m. to 2 p.m., in the parking lot of 449 N. Euclid.

Items include foodstuffs, local produce, dried pasta, bath & body, wearable art, vintage clothing, jewelry, accessories, antiques and collectibles.

Join us for unique finds, food and fun with friends and neighbors.

Never the same show twice!

For more information, contact CWEFLEA@gmail.com or "like us" on Facebook.



Selling the
finest homes
and condos



Lynne
Steinert



Robin
Halterman



BOUTIQUE REALTY

Call us to discuss your
property needs!



4545 Lindell



Nine North



Park East Tower



West End Lofts

314.266.2520
BoutiqueRealtyStl.com

Forest Park Attractions & Cultural Institutions

MISSOURI HISTORICAL SOCIETY

5700 Lindell Blvd.
St. Louis, MO 63112
(Mail should be addressed to
P.O. Box 11940)
Telephone: 746-4599
Website: mohistory.org

MISSOURI HISTORY MUSEUM & RESEARCH CENTER

225 S. Skinker Blvd.
St. Louis, MO 63105
Telephone: 746-4500
Other information as above

THE MUNY (MUNICIPAL THEATRE ASSOCIATION OF ST. LOUIS)

#1 Theatre Dr., Forest Park
St. Louis, MO 63112
Telephone: 361-1900
Website: muny.org

SAINT LOUIS ART MUSEUM

#1 Fine Arts Dr., Forest Park
St. Louis, MO 63110
Telephone: 721-0072
Website: slam.org
The Saint Louis Art Museum is one of the nation's leading comprehensive art museums. Its collections include works of art of exceptional quality from virtually every culture and time period. Areas of notable depth include Oceanic art, pre-Columbian art, ancient Chinese bronzes, and European and American art of the late 19th century and 20th century, with particular strength in German painting.
Panorama Restaurant
Telephone: 655.5490

ST. LOUIS SCIENCE CENTER

5050 Oakland Ave.
St. Louis, MO 63110
Telephone: 289-4400 • Recorded
Information: 289-4444
Website: slsc.org
One of the top five science centers in the country, the St. Louis Science Center features the four-story OMNIMAX® Theater, James S. McDonnell Planetarium, Discovery Room for young children, and Segway® tours through Forest Park. With more than 700 hands-on exhibits and special traveling exhibitions, the Center has no general admission charge and is open seven days a week.

ST. LOUIS ZOO

#1 Government Dr.,
St. Louis, MO 63110
Telephone: 781-0900
Website: stlzoo.org
FOREST PARK
ST. LOUIS DEPARTMENT OF PARKS,
RECREATION & FORESTRY
5600 Clayton Rd., St. Louis, MO 63110
Telephone: 289-5300
Website: <http://stlouis.missouri.org/citygov/parks>

FOREST PARK RECREATIONAL FACILITIES DWIGHT F. DAVIS TENNIS CENTER

5620 Grand Dr.,
St. Louis, MO 63112
(Mail should be addressed to 6300
Clayton Rd., St. Louis, MO 63117)
Telephone: 361-0177
Website: dwrightdavistennis.com

314.329.7696
 juniper eats.com
 360 N BOYLE AVE.

5:00 TO 10
 WED TO SAT

JUNIPER

A SOUTHERN TABLE & BAR

COLD BEER
 LIBERAL LIBATIONS
 TASTY VITTLES



LAFAYETTE SQUARE SPRING HOUSE & GARDEN TOUR

JUNE 7 & 8 • 10AM-5PM

\$16 in advance • \$20 weekend of tour
children free when accompanied by an adult
 Tickets online at www.lafayettesquare.org
 or by phone 314-772-5724

Central West End • St. Louis City • St. Charles County • The World



Dean Porter
 cell: 314.503.1120
 deanrichar@aol.com



4245 Olive
\$329,900
 4 BR, 3-1/2ba, Gaslight Square sub., Custom kitchen, Fireplace, Wood & Ceramic floors, 2 Car Garage



4252 McPherson
\$379,000
 5 BR, 5ba, CWE, 3600 sq. ft., Historic, Renovated, 2 Fireplaces, 2 Car Garage



4900 Pershing Place
\$619,900
 4 BR, 3-1/2ba, CWE, Rehabbed, Fireplace, Wood & Ceramic floors, 2 Car Garage, Corner Lot

- 2006 - 2013 Top Agents, St. Louis Magazine
- Rank in Top .05% of all St. Louis Realtors 1997 - 2013
- 2006 RE/MAX Lifetime Achievement Award
- RE/MAX Platinum Club since 1998
- RE/MAX Hall of Fame since 2001



8081 Manchester Rd. | Brentwood, MO 63144 | Office: 314.781.7777

Forest Park Attractions & Cultural Institutions *continued*

FOREST PARK BIKE PATH

A paved, 7.5-mile path runs through Forest Park and is available not only for bikes but also for roller blading, jogging and walking. An exercise par-course is located along the bike path at the north edge of the park, between Lindell Boulevard and Grand Drive.

RICHARD C. HUDLIN TENNIS COURTS

Located on the east side of Kingshighway Boulevard in front (south) of the BJC Hospital Complex, the Courts are available at no charge on a first come, first served basis. To the east of the courts is a children's playground, also open to the public.

FOREST PARK BOATHOUSE

3 Government Dr., St. Louis, MO 63110
Located at the Grand Basin/Post-Dispatch Lake area
Telephone: 367-2224
Website: bouthouseforestpark.com

NORMAN K. PROBSTEIN COMMUNITY GOLF COURSES & YOUTH LEARNING CENTER

6141 Lagoon Dr., St. Louis, MO 63112
Telephone: 367-1337
Website: forestparkgc.com

THE HIGHLANDS DRIVING RANGE

Information as above

STEINBERG ICE SKATING RINK

400 Jefferson Dr., St. Louis, MO 63110
Located on the east side of the park near the Kingshighway entrance
Telephone: 367-7465
Website: steinbergskatingrink.com

TURTLE PLAYGROUND

Located at the intersection of Oakland and Tamm avenues, these large turtles create a fun play area for children of all ages.



TRUE LOVE COMES QUIETLY... SOMETIMES WITH SPRINKLES.

THE ELIXIR OF LOVE

MAY 31 JUNE 4, 6, 8, 12, 21(M), 25(M)



CONDUCTOR
STEPHEN LORD



DIRECTOR
JOSE MARIA CONDEMI



ADINA
SUSANNAH BILLER



NEMORINO
RENÉ BARBERA

OPERA
THEATRE
OF SAINT
LOUIS

ALSO PART OF OUR 2014 FESTIVAL SEASON

THE MAGIC FLUTE May 24 – June 28

27 June 14, 17, 19, 25, 27, 29

DIALOGUES OF THE CARMELITES June 18 – 28

Tickets start for as little as \$25.

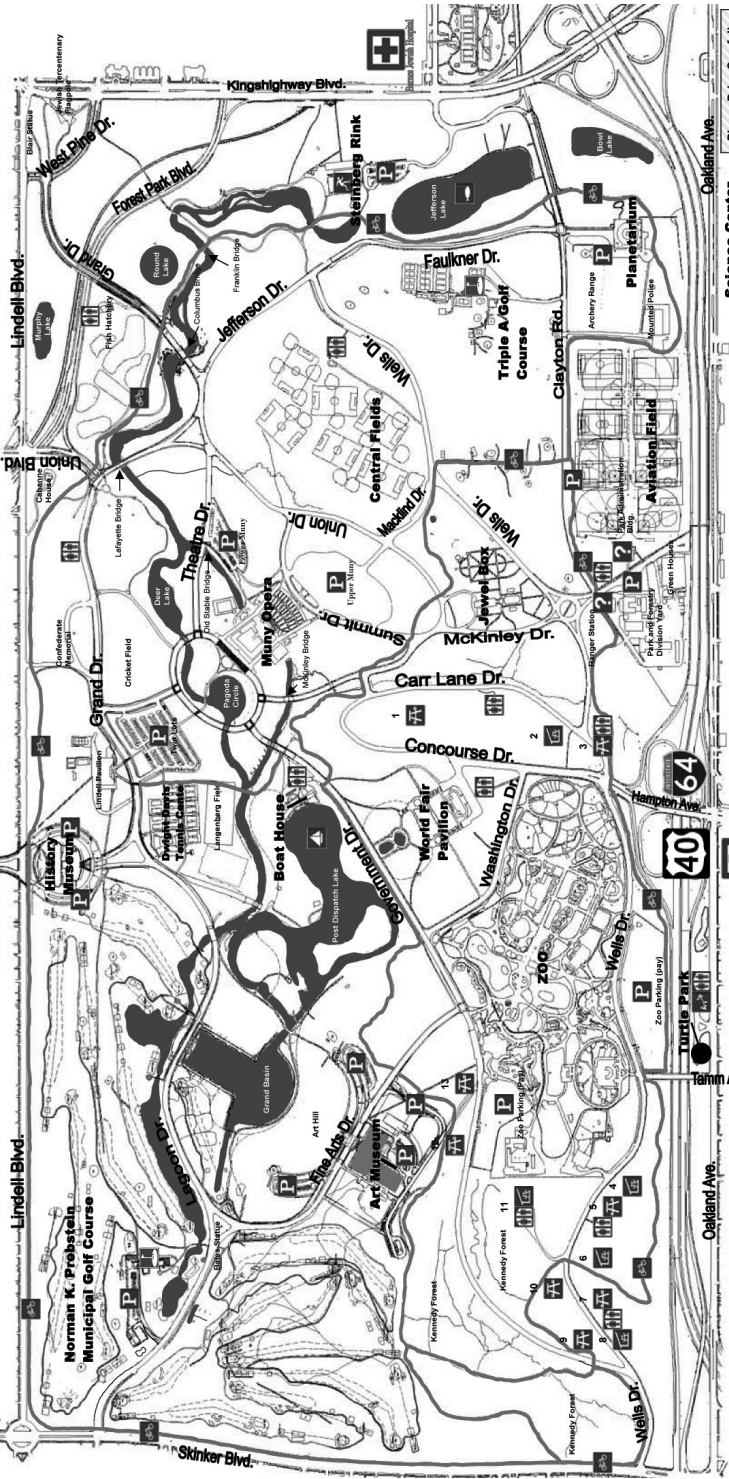
ExperienceOpera.org / (314) 961-0644

Opera Theatre gratefully acknowledges
2014 season presenting sponsor

WELLS
FARGO

ADVISORS

Forest Park



Prepared By:
 City of St. Louis Planning Director
 St. Louis, MO 63106
 8-19-2002
 James Swann

Scale:
 1" = 200'

| | |
|--|------------------|
| | Parking |
| | Bike Path |
| | Playground |
| | Hospital |
| | Public Parking |
| | Park Information |

| | |
|--|------------------------|
| | Covered Picnic Area |
| | Picnic Area |
| | Golf Courses Clubhouse |
| | Key |
| | Comfort Station |

? Park Information and Directions Available At These Locations
 Call (314) 386-5300 (M-F 8:45-3:00pm) for Forest Park Information.
 PARK EMERGENCY: (800) 911

Please Drive Carefully
SPEED LIMIT 25
 Park Speed Limit 25 mph

GLADYS
 **MANION**
REAL ESTATE

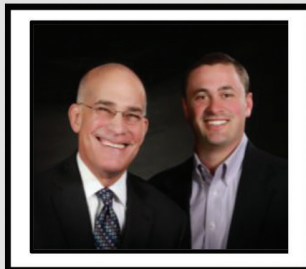


36 PORTLAND PLACE ~ \$1,385,000

Exceptional turn of the century Forest Park Mansion.
A complete resort setting with pool, patios and terraces.
5 bedrooms, 4 baths. Manageable & functional at 7,800SF.

**WAYNE
NORWOOD
BROKER**

314.629.3931



**BEN
PATTON
REALTOR &
BUSINESS
ANALYST**

"Proud to Be Locally Owned & Operated Since 1936"
GladysManion.com • 314.721.4755

A cut above.

